

A Cautionary Tale: Burning the Medial Axis Is Unstable

Erin Chambers  

Saint Louis University, MO, USA

Christopher Fillmore  

IST Austria, Klosterneuburg, Austria

Elizabeth Stephenson  

IST Austria, Klosterneuburg, Austria

Mathijs Wintraecken  

IST Austria, Klosterneuburg, Austria

Abstract

The medial axis of a set consists of the points in the ambient space without a unique closest point on the original set. Since its introduction, the medial axis has been used extensively in many applications as a method of computing a topologically equivalent skeleton. Unfortunately, one limiting factor in the use of the medial axis of a smooth manifold is that it is not necessarily topologically stable under small perturbations of the manifold. To counter these instabilities various prunings of the medial axis have been proposed. Here, we examine one type of pruning, called burning. Because of the good experimental results, it was hoped that the burning method of simplifying the medial axis would be stable. In this work we show a simple example that dashes such hopes based on Bing’s house with two rooms, demonstrating an isotopy of a shape where the medial axis goes from collapsible to non-collapsible.

2012 ACM Subject Classification Theory of computation → Computational geometry

Keywords and phrases Medial axis, Collapse, Pruning, Burning, Stability

Digital Object Identifier 10.4230/LIPIcs.SoCG.2022.66

Category Media Exposition

Funding Partially supported by the DFG Collaborative Research Center TRR 109, “Discretization in Geometry and Dynamics” and the European Research Council (ERC), grant no. 788183, “Alpha Shape Theory Extended”.

Erin Chambers: Supported in part by the National Science Foundation through grants DBI-1759807, CCF-1907612, and CCF-2106672.

Mathijs Wintraecken: Supported by the European Union’s Horizon 2020 research and innovation programme under the Marie Skłodowska-Curie grant agreement No. 754411. The Austrian science fund (FWF) M-3073

Acknowledgements We thank André Lieutier, David Letscher, Ellen Gasparovic, Kathryn Leonard, and Tao Ju for early discussions on this work. We also thank Lu Liu, Yajie Yan and Tao Ju for sharing code to generate the examples.

1 Introduction

The medial axis $\text{ax}(\mathcal{S})$ of a closed set $\mathcal{S} \subset \mathbb{R}^d$ is the set of points in \mathbb{R}^d for which the closest point in \mathcal{S} is not unique. We note that although Federer [22] already studied the (complement of the) medial axis, the name was coined later by Blum [8]. The medial axis is used in many applications as a method of computing a topologically equivalent skeleton. The medial axis also has deep connections to singularity theory [2, 9, 17, 28, 29, 34, 35, 38].



© Erin Chambers, Christopher Fillmore, Elizabeth Stephenson, and Mathijs Wintraecken; licensed under Creative Commons License CC-BY 4.0

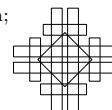
38th International Symposium on Computational Geometry (SoCG 2022).

Editors: Xavier Goaoc and Michael Kerber; Article No. 66; pp. 66:1–66:9

Leibniz International Proceedings in Informatics

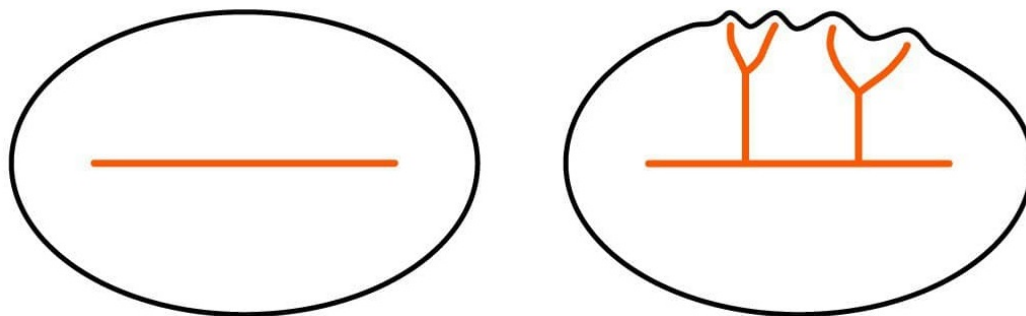


LIPICs Schloss Dagstuhl – Leibniz-Zentrum für Informatik, Dagstuhl Publishing, Germany

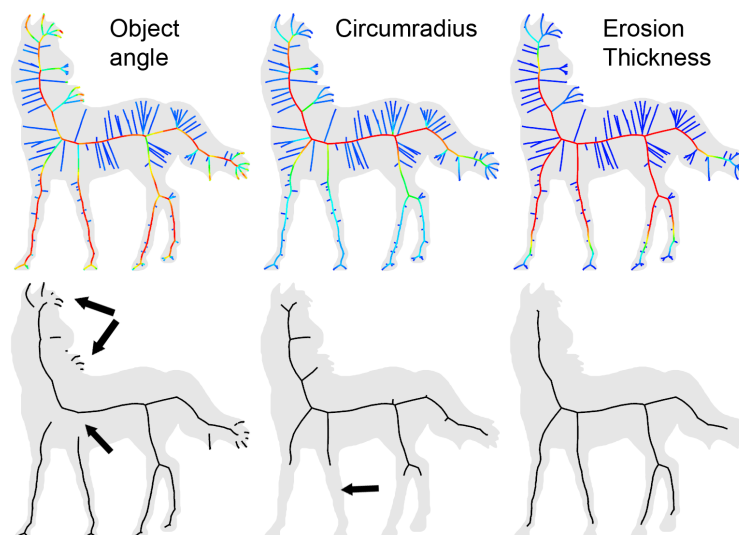


66:2 A Cautionary Tale: Burning the Medial Axis Is Unstable

Unfortunately, one limiting factor in the use of the medial axis is its (topological) instability under small perturbations [3]. Here small is understood to be small with respect to the Hausdorff distance. See Figure 1 for a standard example of such an instability. However the medial axis does capture the homotopy type [26, 36]. The radius function and medial axis together suffice to reconstruct the original set (under reasonable assumptions) [14, 15, 16, 18].



■ **Figure 1** Small perturbations (with respect to the Hausdorff distance) can lead to large perturbations of the medial axis.



■ **Figure 2** Various pruning methods, from left to right: Object angles [4, 21], radius of the set of closest points [12] (the λ -medial axis, also used in our computation), and a burning method proposed in [37], with various undesirable features indicated. The value of the object angle, radius of the set of closest points, and burning time is indicated in colour on top. Reproduced from [37].

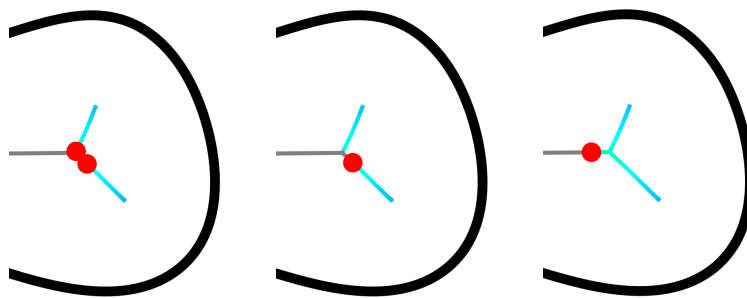
If we restrict ourselves to a smaller class of spaces and perturbations, stability results are available: Chazal and Soufflet [11] proved that the medial axis is stable with respect to the Hausdorff distance under ambient diffeomorphisms, if we assume that the set of positive reach is a C^2 manifold and the distortion is a C^2 diffeomorphism of \mathbb{R}^b .

Significant effort has gone into the simplification (pruning) of the medial axis. This was motivated by applications in graphics (where it is used as a skeleton, see the surveys [30, 33]), data reduction, shape recognition, and learning (see for example [5, 10, 19, 25, 27, 31, 32, 37]).

Many prunings of the medial axis have been proposed in many different settings [1, 4, 7, 12, 20, 21, 24, 27, 32]. See Figure 2 for an illustration of some commonly used ones and their pitfalls: the object angle, which is of historic importance in the community but can disconnect the medial axis, the λ -medial axis, which is used to compute a close approximation of the medial axis but which can truncate “thin” regions undesirably, and the burning method which we consider in this work.

2 Burning Bing’s house

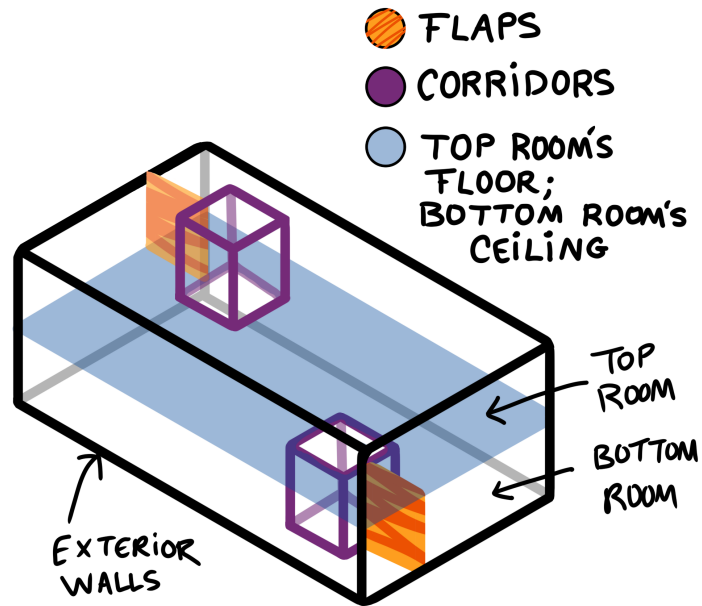
The simplification which we focus on for this work is the burning of the medial axis [37], which generalizes Blum’s original “grassfire” analogy for the medial axis. The burning of the medial axis removes the extremities of the medial axis by “starting a fire” at the boundary of the medial axis which stops if the fire hits an obstacle, as illustrated in Figure 3.



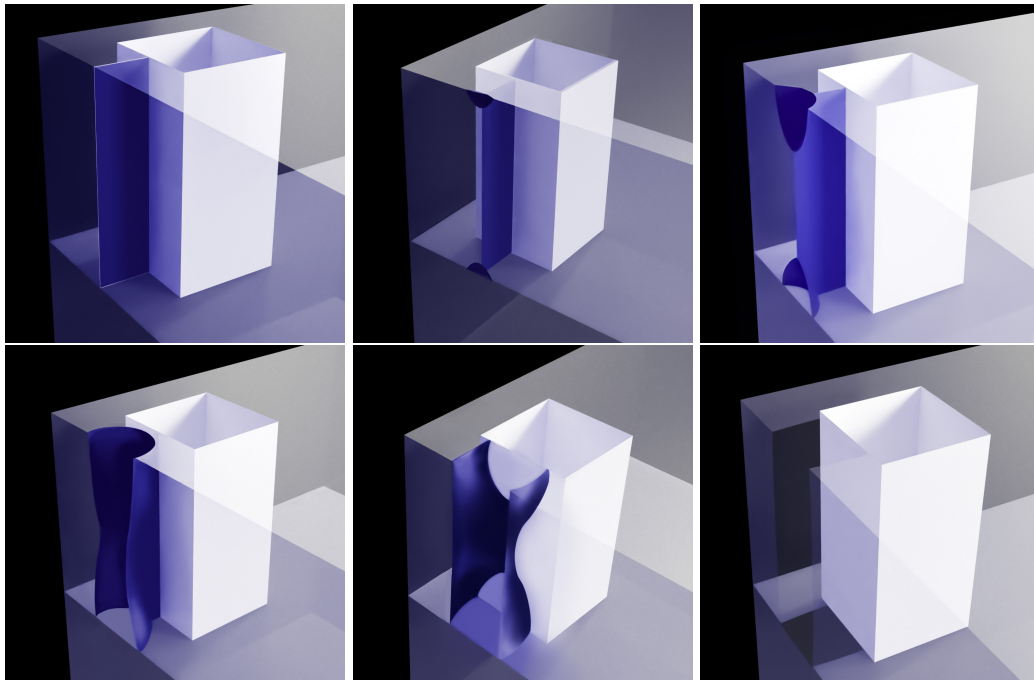
■ **Figure 3** The fire front progression on a the medial axis (grey) of a curve (black). As the fire front (indicated by the red dot) hits an unburned junction, it stops. If the junction is already burned (with the colour indicating the burn time) the fire continues.

Because of the good experimental results, it was conjectured that the burning method of simplification of the medial axis would be stable [27], i.e. no discontinuous jumps. In this work we show that this is not the case. The counter example is based on the standard deformation retract from the closed ball to Bing’s house with two rooms [6], which is a contractible but not collapsible two dimensional simplicial complex, see Figure 6. Bing’s house is not collapsible, as there is no boundary.

Before we go into the main statement we consider a deformation of Bing’s house which makes it collapsible. This deformation will be mirrored in the medial axis in our construction, this deformation is depicted in Figure 5, see Figure 4 for the nomenclature. In this construction we cut a flap open so that the room no longer completely runs around the corridor. This cutting exposes an edge of one of the walls of the corridor and path that goes from the edge to the bottom room. We can use this edge to collapse along the path into the bottom room, then the room, and from this the rest of Bing’s house.



■ **Figure 4** The various parts of Bing's house indicated.



■ **Figure 5** This deformation, which cuts a flap open, makes Bing's house collapsible.

The precise result is the following:

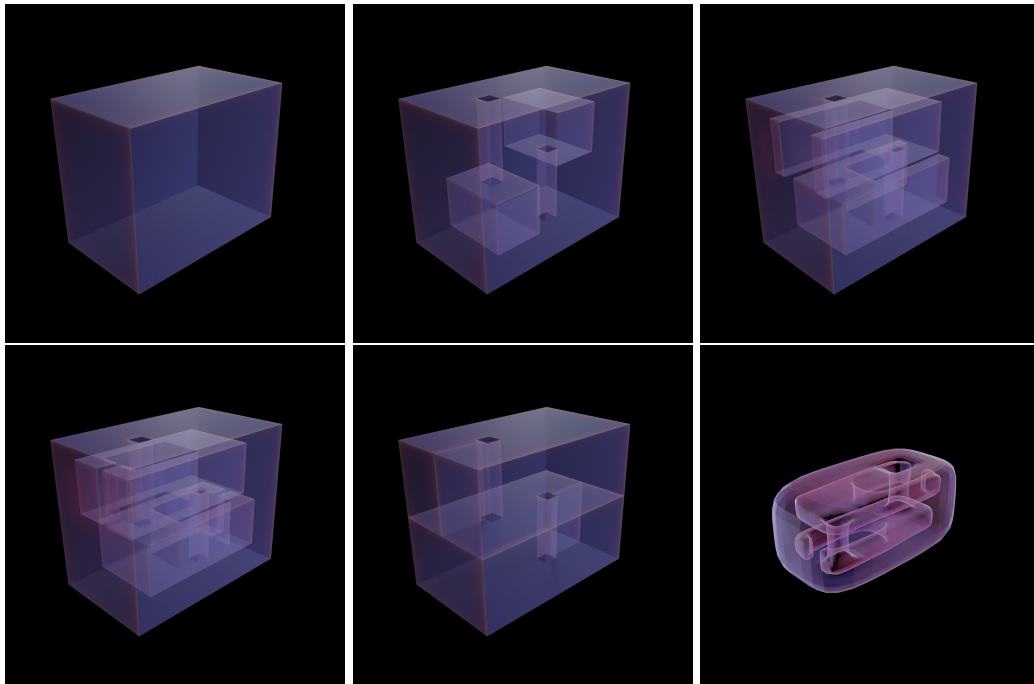
- **Theorem 1.** *There exists a smooth ambient isotopy $H_t : [0, 1] \times \mathbb{S}^2 \rightarrow \mathbb{R}^3$ such that:*
- *The medial axis $\text{ax}(H_0(\mathbb{S}^2))$ is collapsible/burn to a single point.*
 - *The medial axis $\text{ax}(H_1(\mathbb{S}^2))$ is Bing's house and is therefore non-collapsible/ cannot burn.*
 - *The burning of $\text{ax}(H_t(\mathbb{S}^2))$ is not continuous in t with respect to the Hausdorff distance.*
 - *The topology of the burned axis changes from a point to Bing's house with two rooms at a single $t_0 \in [0, 1]$.*
 - *The isotopy H_t can be chosen to be generic in the sense of singularity theory as developed by Arnol'd and Thom [2], see in particular [23].*

Proof. Bing constructed his house as a deformation retract from a solid cube, see Figure 6. The isotopy of the sphere we consider is the boundary of this deformation. However instead of reducing to a two dimensional object we skip the last step so that every point in the deformation the set remains a topological (solid) ball and its boundary a sphere. The end point of this deformation is a thickened version Bing's house. We will only consider the medial axis in the interior of the sphere and not the exterior. The medial axis of a thickened version of Bing's house is Bing's house itself. The deformation is depicted in Figure 7. The essential topological change only happens near the end of the deformation when the room wraps around the corridor, see Figure 8. When the bisector between the corridor and the wall disappears and is replaced by the bisector between the two parts of the room that are wrapping around the corridor, the medial axis becomes non-collapsible. This transition can be made generic in terms of the transitions of the singularities [23]. ◀

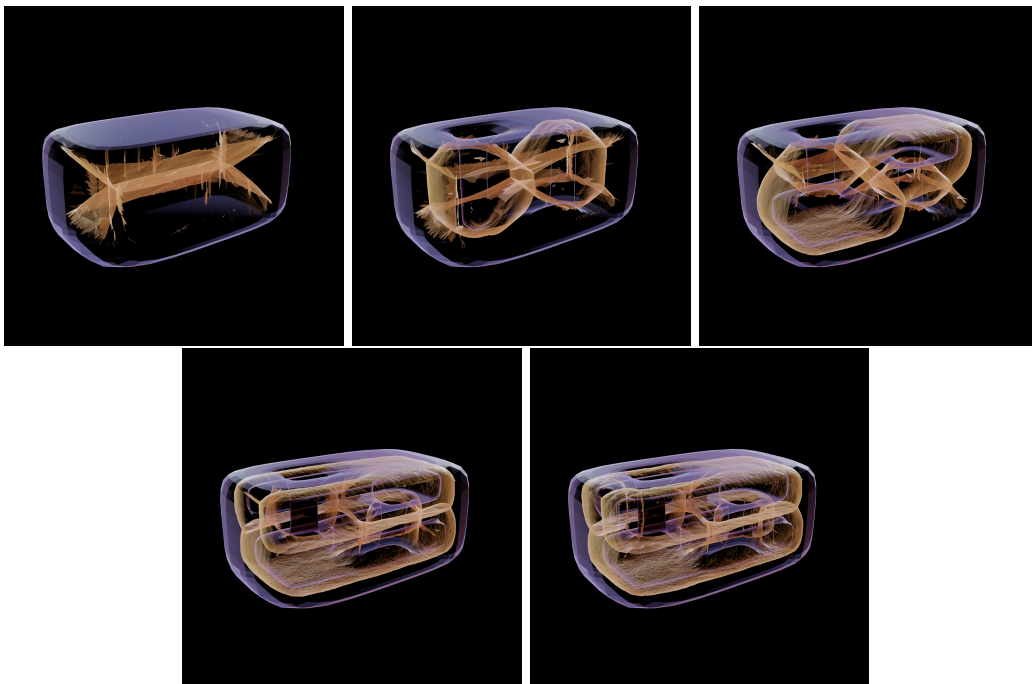
We illustrate this deformation in our video; see also Figures 6, 7, and 8. These animations were made using the λ -medial axis (see https://github.com/cdfillmore/lambda_medial_axis) and the open source software Blender [13]. Here λ is chosen very small to ensure that the λ -medial axis is a good approximation of the medial axis.

► **Corollary 2.** *Collapsing or pruning the medial axis of a domain such that it becomes one-dimensional, as proposed in e.g. [7], is not always possible, even if the boundary of a domain is a smooth sphere.*

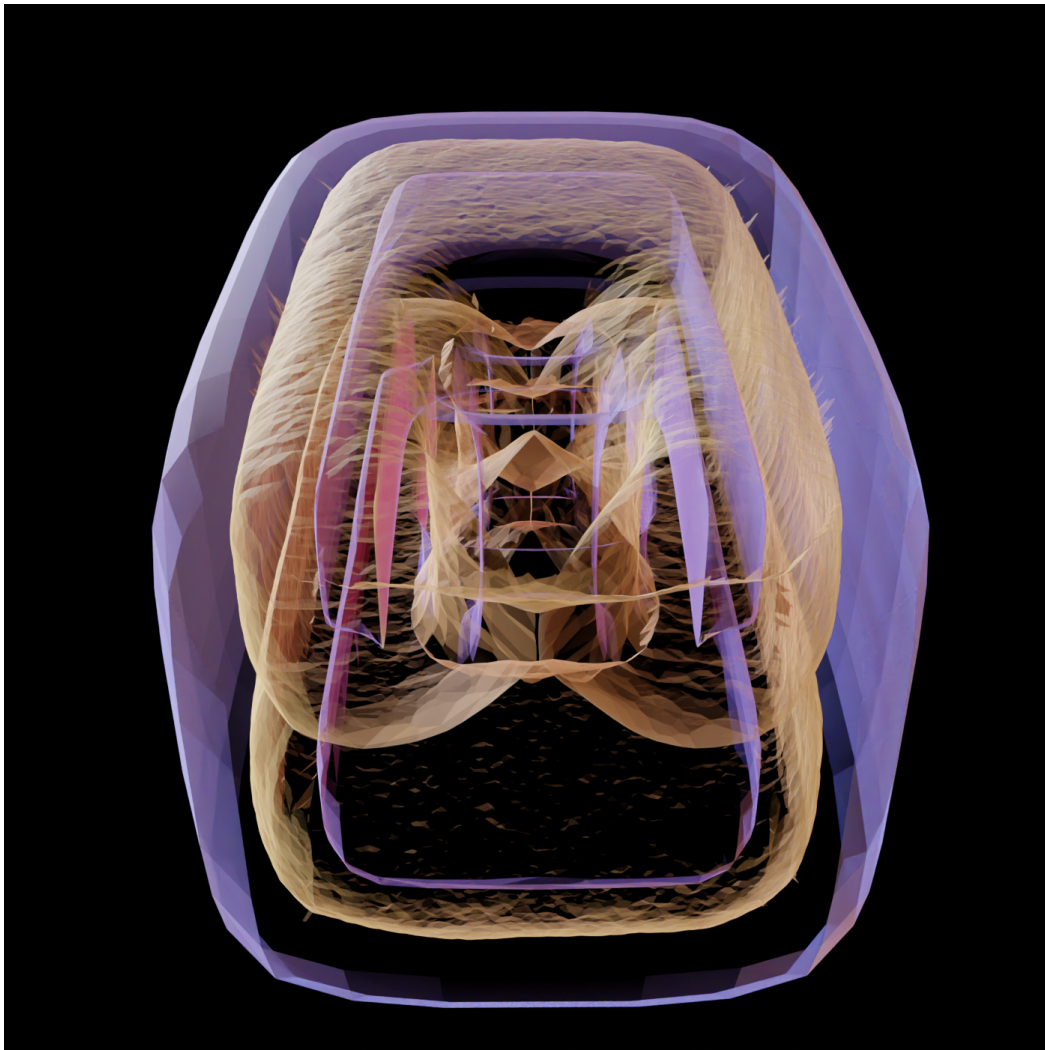
66:6 A Cautionary Tale: Burning the Medial Axis Is Unstable



■ **Figure 6** The deformation retract of a solid cube (topological ball) to Bing's house. In the final frame we show the smoothed version of a thickened Bing's house used in the computation.



■ **Figure 7** The evolution of the medial axis (yellow) in the interior as the solid cube is deformed into a thickened version of Bing's house (blue/purple).



■ **Figure 8** The critical transition of the medial axis. There are points on the medial axis equidistant to the two parts of the room that wrap around the corridor, the corridor itself and the exterior wall, which can be avoided by a small perturbation. This transition occurs between frames 4 and 5 of Figure 6.

References

- 1 Nina Amenta, Sunghee Choi, and Ravi Krishna Kolluri. The power crust, unions of balls, and the medial axis transform. *Computational Geometry: Theory and Applications*, 19(2-3):127–153, 2001. doi:10.1016/S0925-7721(01)00017-7.
- 2 Vladimir Arnol'd. *Singularities of caustics and wave fronts*, volume 62 of *Mathematics and its Applications*. Springer Science & Business Media, 2013.
- 3 D. Attali, J.-D. Boissonnat, and H. Edelsbrunner. Stability and computation of medial axes - a state-of-the-art report. In *Mathematical Foundations of Scientific Visualization, Computer Graphics, and Massive Data Exploration*, Mathematics and Visualization, pages 109–125. Springer Berlin Heidelberg, 2009.
- 4 Dominique Attali and Annick Montanvert. Modeling noise for a better simplification of skeletons. In *Proceedings of 3rd IEEE International Conference on Image Processing*, volume 3, pages 13–16. IEEE, 1996. doi:10.1109/ICIP.1996.560357.

- 5 Gulce Bal, Julia Diebold, Erin Wolf Chambers, Ellen Gasparovic, Ruizhen Hu, Kathryn Leonard, Matineh Shaker, and Carola Wenk. Skeleton-based recognition of shapes in images via longest path matching. In *Research in Shape Modeling*, volume 1 of *Association for Women in Mathematics Series*, pages 81–99. Springer, 2015. doi:10.1007/978-3-319-16348-2_6.
- 6 RH Bing. Some aspects of the topology of 3-manifolds related to the Poincaré conjecture. In T.L. Saaty, editor, *Lectures on modern mathematics*, volume II, pages 93–128. John Wiley and Sons, 1964.
- 7 Thibault Blanc-Beyne, Géraldine Morin, Kathryn Leonard, Stefanie Hahmann, and Axel Carlier. A salience measure for 3D shape decomposition and sub-parts classification. *Graphical Models*, 99:22–30, 2018. doi:10.1016/j.gmod.2018.07.003.
- 8 Harry Blum. A Transformation for Extracting New Descriptors of Shape. In Weiant Wathen-Dunn, editor, *Models for the Perception of Speech and Visual Form*, pages 362–380. MIT Press, Cambridge, 1967.
- 9 Michael A. Buchner. The structure of the cut locus in dimension less than or equal to six. *Compositio Mathematica*, 37(1):103–119, 1978. URL: http://www.numdam.org/item/CM_1978__37_1_103_0/.
- 10 Ming-Ching Chang and Benjamin B. Kimia. Measuring 3d shape similarity by graph-based matching of the medial scaffolds. *Computer Vision and Image Understanding*, 115(5):707–720, May 2011. doi:10.1016/j.cviu.2010.10.013.
- 11 F. Chazal and R. Soufflet. Stability and finiteness properties of medial axis and skeleton. *Journal of Dynamical and Control Systems*, 10(2):149–170, 2004. doi:10.1023/B:JODS.0000024119.38784.ff.
- 12 Frédéric Chazal and André Lieutier. The “ λ -medial axis”. *Graphical Models*, 67(4):304–331, 2005. doi:10.1016/j.gmod.2005.01.002.
- 13 Blender Online Community. *Blender - a 3D modelling and rendering package*. Blender Foundation, Stichting Blender Foundation, Amsterdam, 2018. URL: <http://www.blender.org>.
- 14 James Damon. Smoothness and geometry of boundaries associated to skeletal structures I: Sufficient conditions for smoothness. In *Annales de l’institut Fourier*, volume 53(6), pages 1941–1985, 2003. doi:10.5802/aif.1997.
- 15 James Damon. Smoothness and geometry of boundaries associated to skeletal structures, II: Geometry in the Blum case. *Compositio Mathematica*, 140(6):1657–1674, 2004. doi:10.1112/S0010437X04000570.
- 16 James Damon. Determining the geometry of boundaries of objects from medial data. *International Journal of Computer Vision*, 63(1):45–64, 2005.
- 17 James Damon. The global medial structure of regions in \mathbb{R}^3 . *Geometry & Topology*, 10(4):2385–2429, 2006. doi:10.2140/gt.2006.10.2385.
- 18 James Damon. Global geometry of regions and boundaries via skeletal and medial integrals. *Communications in Analysis and Geometry*, 15(2):307–358, 2007. doi:10.4310/CAG.2007.v15.n2.a5.
- 19 Ilke Demir, Camilla Hahn, Kathryn Leonard, Geraldine Morin, Dana Rahbani, Athina Panotopoulou, Amelie Fondevilla, Elena Balashova, Bastien Durix, and Adam Kortylewski. SkelNetOn 2019: Dataset and challenge on deep learning for geometric shape understanding. In *2019 IEEE/CVF Conference on Computer Vision and Pattern Recognition Workshops (CVPRW)*, pages 1143–1151, 2019. doi:10.1109/CVPRW.2019.00149.
- 20 Tamal K. Dey and Jian Sun. Defining and computing curve-skeletons with medial geodesic function. In *Proceedings of the Fourth Eurographics Symposium on Geometry Processing, SGP ’06*, pages 143–152, Goslar, DEU, 2006. Eurographics Association.
- 21 Tamal K Dey and Wulue Zhao. Approximating the medial axis from the Voronoi diagram with a convergence guarantee. *Algorithmica*, 38(1):179–200, 2004. doi:10.1007/s00453-003-1049-y.
- 22 H. Federer. Curvature measures. *Transactions of the American Mathematical Society*, 93:418–491, 1959. doi:10.1090/S0002-9947-1959-0110078-1.

- 23 Peter J Giblin, Benjamin B Kimia, and Anthony J Pollitt. Transitions of the 3D medial axis under a one-parameter family of deformations. *IEEE Transactions on Pattern Analysis and Machine Intelligence*, 31(5):900–918, 2008. doi:10.1109/TPAMI.2008.120.
- 24 Joachim Giesen, Balint Miklos, Mark Pauly, and Camille Wormser. The scale axis transform. In *Proceedings of the Twenty-Fifth Annual Symposium on Computational Geometry*, pages 106–115, New York, NY, USA, 2009. Association for Computing Machinery. doi:10.1145/1542362.1542388.
- 25 Seng-Beng Ho and Charles R Dyer. Shape smoothing using medial axis properties. *IEEE Transactions on Pattern Analysis and Machine Intelligence*, PAMI-8(4):512–520, 1986. doi:10.1109/TPAMI.1986.4767815.
- 26 André Lieutier. Any open bounded subset of \mathbb{R}^n has the same homotopy type as its medial axis. *Computer-Aided Design*, 36(11):1029–1046, 2004. Solid Modeling Theory and Applications. doi:10.1016/j.cad.2004.01.011.
- 27 Lu Liu, Erin W. Chambers, David Letscher, and Tao Ju. Extended grassfire transform on medial axes of 2d shapes. *Computer-Aided Design*, 43(11):1496–1505, 2011. Solid and Physical Modeling 2011. doi:10.1016/j.cad.2011.09.002.
- 28 Eduard Looijenga. *Structural Stability of smooth families of C^∞ -functions*. PhD thesis, Universiteit van Amsterdam, 1974.
- 29 John N Mather. Distance from a submanifold in Euclidean-space. In *Proceedings of symposia in pure mathematics*, volume 40, pages 199–216. American Mathematical Society, 1983.
- 30 Punam K Saha, Gunilla Borgefors, and Gabriella Sanniti di Baja. A survey on skeletonization algorithms and their applications. *Pattern recognition letters*, 76:3–12, 2016.
- 31 T.B. Sebastian, P.N. Klein, and B.B. Kimia. Recognition of shapes by editing their shock graphs. *IEEE Transactions on Pattern Analysis and Machine Intelligence*, 26(5):550–571, 2004. doi:10.1109/TPAMI.2004.1273924.
- 32 Doron Shaked and Alfred M. Bruckstein. Pruning medial axes. *Computer Vision and Image Understanding*, 69(2):156–169, 1998. doi:10.1006/cviu.1997.0598.
- 33 Andrea Tagliasacchi, Thomas Delame, Michela Spagnuolo, Nina Amenta, and Alexandru Telea. 3D skeletons: A state-of-the-art report. In *Computer Graphics Forum*, volume 35(2), pages 573–597. Wiley Online Library, 2016. doi:10.1111/cgf.12865.
- 34 R. Thom. Sur le cut-locus d’une variété plongée. *Journal of Differential Geometry*, 6(4):577–586, 1972. doi:10.4310/jdg/1214430644.
- 35 Martijn van Manen. Maxwell strata and caustics. In *Singularities In Geometry And Topology*, pages 787–824. World Scientific, 2007.
- 36 Franz-Erich Wolter. Cut locus and medial axis in global shape interrogation and representation. In *MIT Design Laboratory Memorandum 92-2 and MIT Sea Grant Report*, 1992.
- 37 Yajie Yan, Kyle Sykes, Erin Chambers, David Letscher, and Tao Ju. Erosion thickness on medial axes of 3d shapes. *ACM Transactions on Graphics*, 35(4):38:1–38:12, July 2016. doi:10.1145/2897824.2925938.
- 38 Yosef Yomdin. On the local structure of a generic central set. *Compositio Mathematica*, 43(2):225–238, 1981. URL: http://www.numdam.org/item/CM_1981__43_2_225_0/.